

This page shows the frequency of the top 7 "L2" lineages for Australia, across recent months.

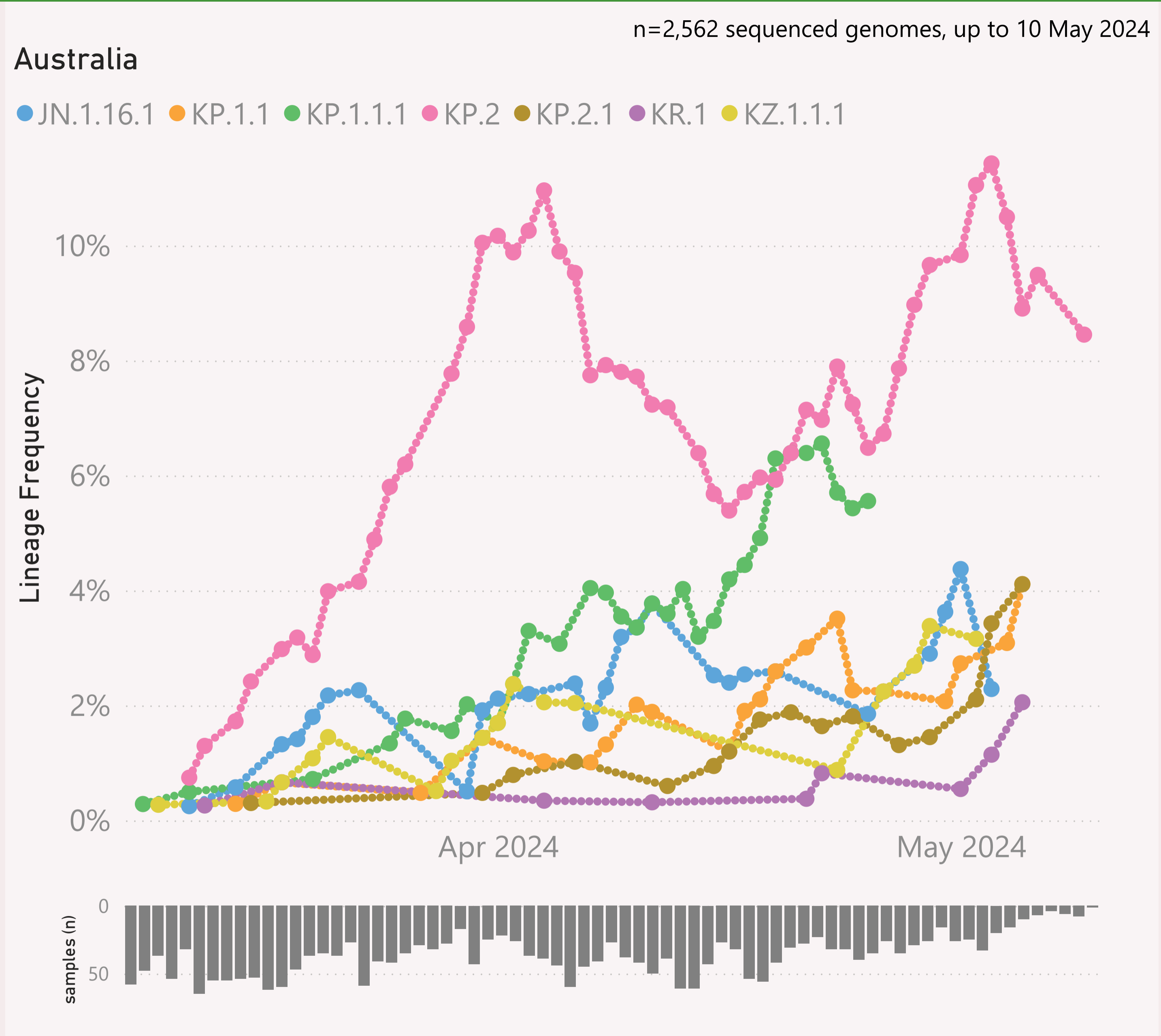
The detailed Lineage classifications are provided by Nextclade. I roll those up into "L2" groups, which roughly follow the WHO Variant definitions. For example, my "BA.2.86.*" group includes BA.2.86 and all its descendants, e.g. the JN.* lineages.

The detailed Lineage classifications are quite numerous and dynamic, so the "Lineage L2" groups give a simpler and more stable basis for analysis and comparison.

The frequency shown at each point is based on the 7-day rolling average across all lineages.

The grey column chart across the bottom shows the volume of sequences available by date. As there can be long sample and data processing times, it is quite routine for recent dates to show lower sample sizes.

The frequency results calculated for the most recent dates might not be representative, due to those lower sample sizes.



This page shows the frequency of the top 7 lineages for Australia, across recent months. The lineages are filtered for a "Lineage L2" group of interest, currently "JN.1.* + FLiRT".

The Lineage classifications are provided by Nextclade. The colour assignments are random.

The frequency shown at each point is based on the 7-day rolling average across all lineages.

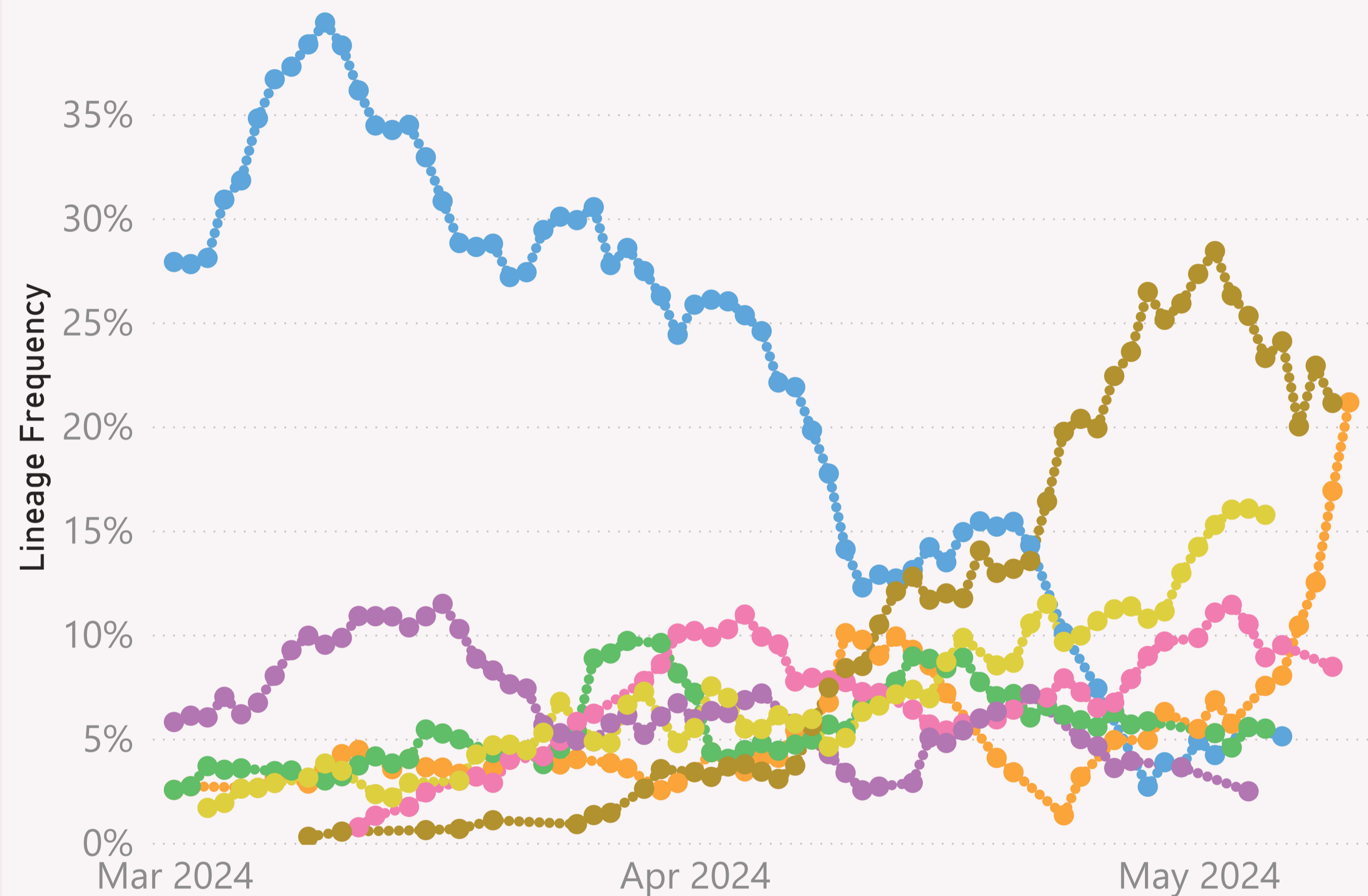
The grey column chart across the bottom shows the volume of sequences available by date. As there can be long sample and data processing times, it is quite routine for recent dates to show lower sample sizes.

The frequency results calculated for the most recent dates might not be representative, due to those lower sample sizes.

n=2,562 sequenced genomes, up to 10 May 2024

Australia

● JN.1 ● JN.1.16 ● JN.1.32 ● KP.2 ● KP.3 ● KW.1 ● KW.1.1



This page shows the frequency of the top 7 lineages for Australia, across recent months.

The Lineage classifications are provided by Nextclade. The colour assignments are random.

The frequency shown at each point is based on the 7-day rolling average across all lineages.

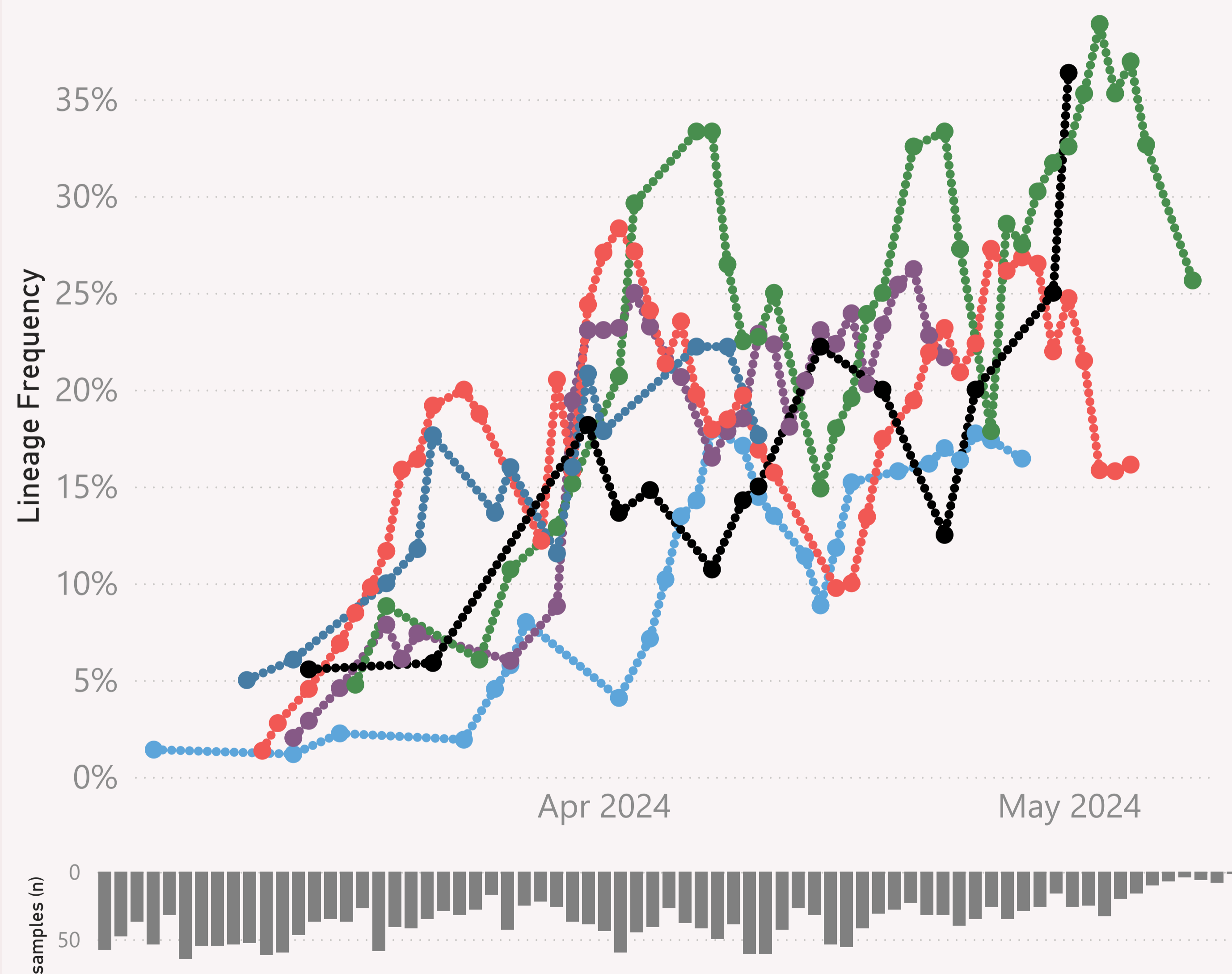
The grey column chart across the bottom shows the volume of sequences available by date. As there can be long sample and data processing times, it is quite routine for recent dates to show lower sample sizes.

The frequency results calculated for the most recent dates might not be representative, due to those lower sample sizes.

n=2,562 sequenced genomes, up to 10 May 2024

JN.1.* +FLiRT

● New South ... ● Queensland ● South Australia ● Tasmania ● Victoria ● Western ...



This page shows the frequency of a selected "Lineage L2" group of interest, across the states of Australia, over recent months.

The detailed Lineage classifications are provided by Nextclade. I roll those up into "L2" groups, which roughly follow the WHO Variant definitions. For example, my "BA.2.86.*" group includes BA.2.86 and all its descendants, e.g. the JN.* lineages.

The detailed Lineage classifications are quite numerous and dynamic, so the "Lineage L2" groups give a simpler and more stable basis for analysis and comparison.

The frequency shown at each point is based on the 7-day rolling average across all lineages, for that state.

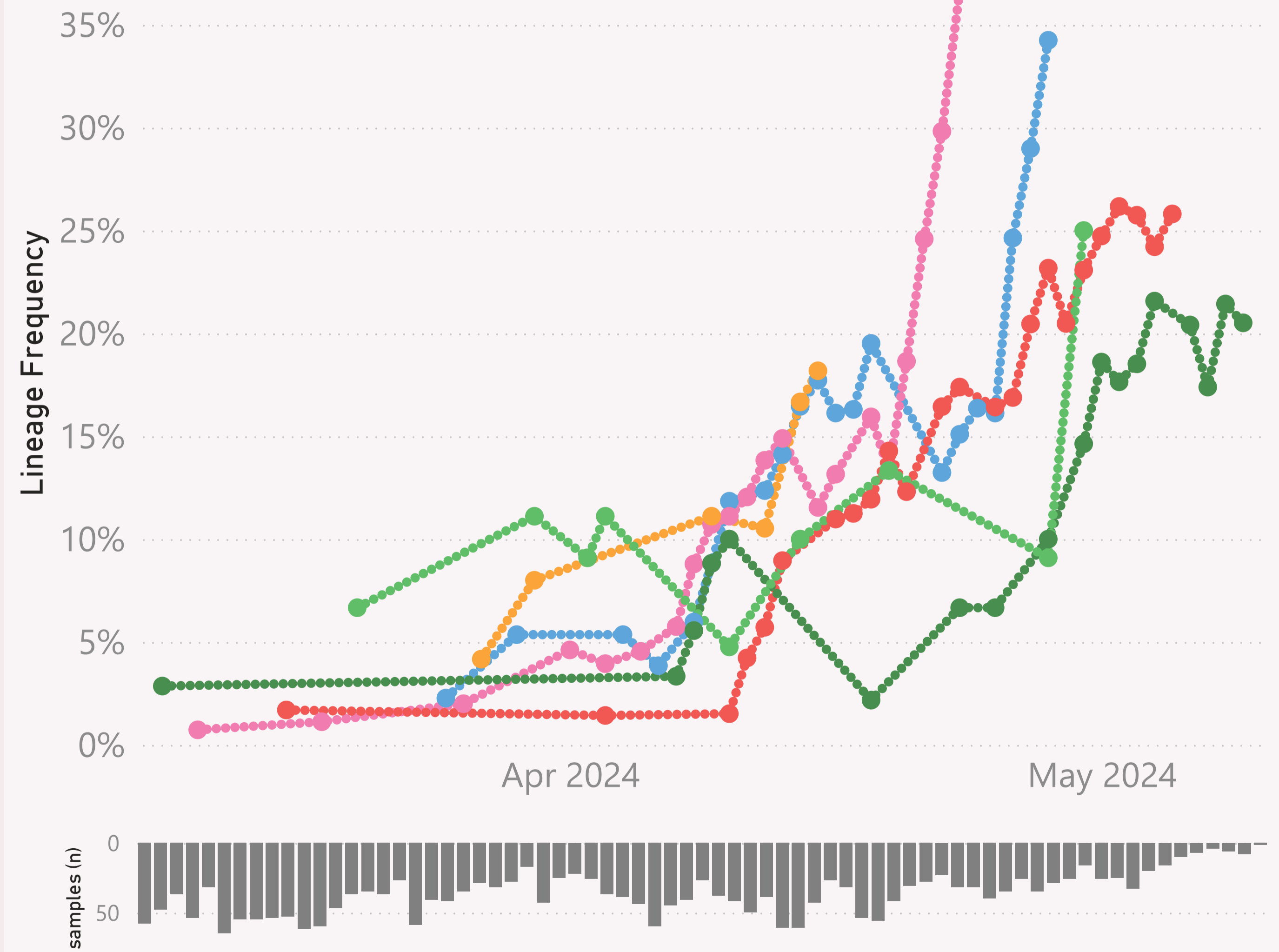
The grey column chart across the bottom shows the volume of sequences available by date. As there can be long sample and data processing times, it is quite routine for recent dates to show lower sample sizes.

The frequency results calculated for the most recent dates might not be representative, due to those lower sample sizes.

KP.3

n=2,562 sequenced genomes, up to 10 May 2024

● New South ... ● Queensland ● South Australia ● Tasmania ● Victoria ● Western ...



This page shows the frequency of a selected Lineage of interest, across the states of Australia, over recent months.

The Lineage classifications are provided by Nextclade.

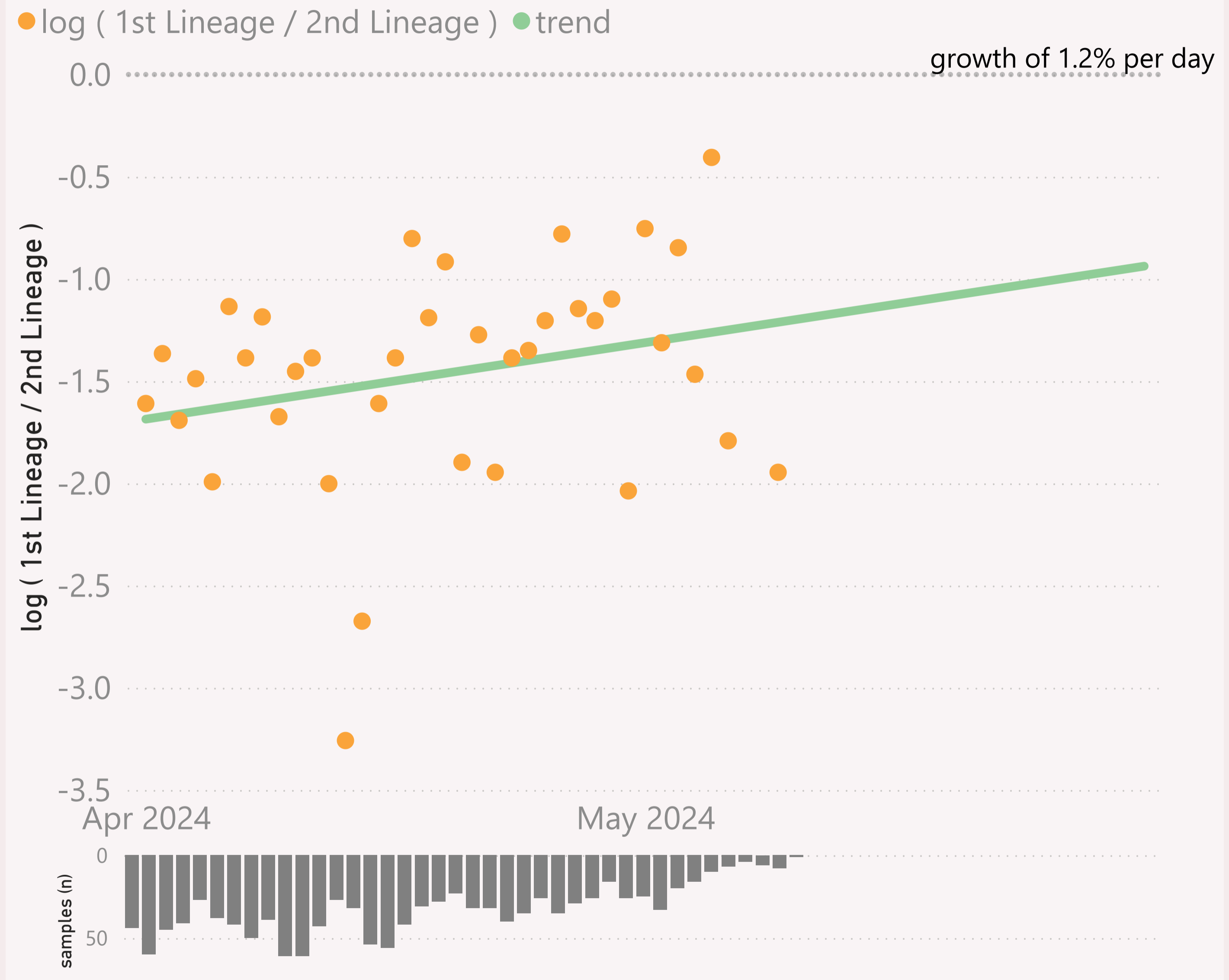
The frequency shown at each point is based on the 7-day rolling average across all lineages, for that state.

The grey column chart across the bottom shows the volume of sequences available by date. As there can be long sample and data processing times, it is quite routine for recent dates to show lower sample sizes.

The frequency results calculated for the most recent dates might not be representative, due to those lower sample sizes.

n=1,271 sequenced genomes, up to 10 May 2024

Australia - JN.1.* +FLiRT vs BA.2.86.*



This page compares the relative frequency of 2 selected "Lineage L2" groups for Australia, over recent months. A challenging Lineage L2 is selected first, and compared to the incumbent.

The trend is shown as a green line and expressed as a daily growth % advantage. If the green line crosses over the 0.0 line, the date when that occurred or is predicted to occur will be shown. At that point the challenging Lineage L2 is considered to have "crossed over" or taken over dominance from the incumbent Lineage L2.

The Lineage classifications are provided by Nextclade. I add the "Lineage L2" groups, typically following common variant groupings, but occasionally being "creative".

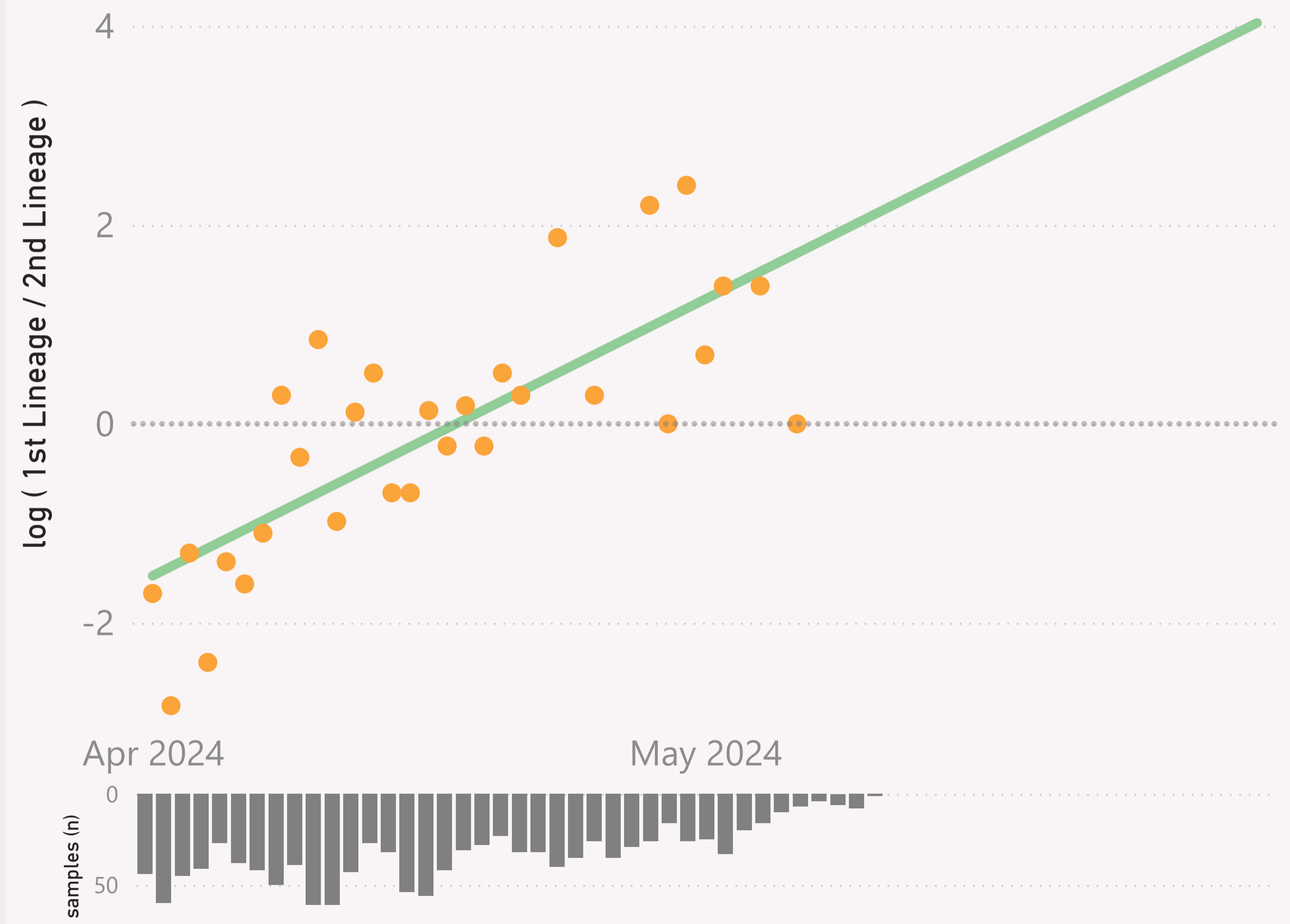
The grey column chart across the bottom shows the volume of sequences available by date. As there can be long sample and data processing times, it is quite routine for recent dates to show lower sample sizes.

n=1,271 sequenced genomes, up to 10 May 2024

Australia - KP.3 vs JN.1

● log (1st Lineage / 2nd Lineage) ● trend

growth of 9.3% per day, crossover on 18-Apr-24

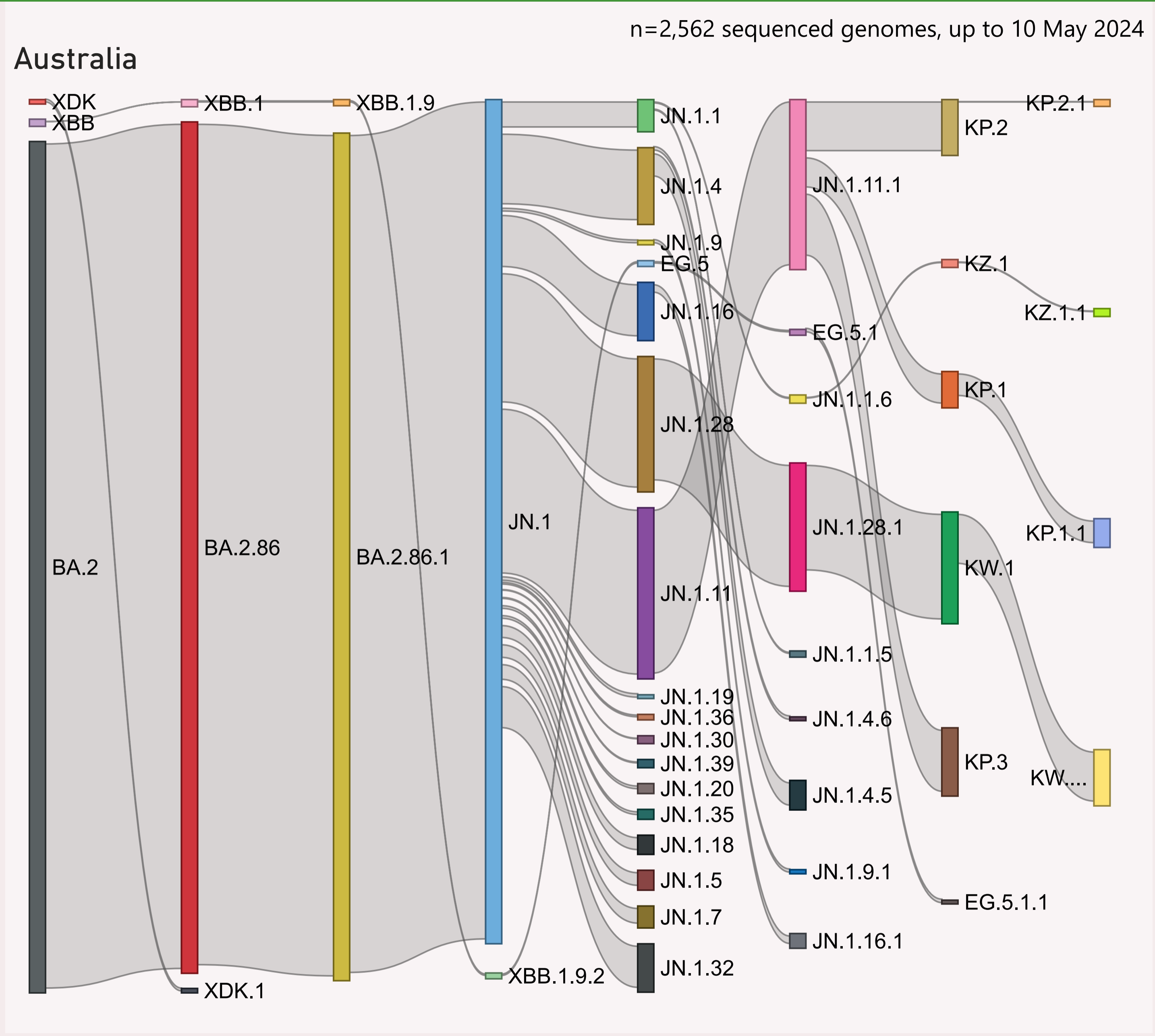


This page compares the relative frequency of 2 selected Lineages for Australia, over recent months. A challenging Lineage is selected first, and compared to the incumbent.

The trend is shown as a green line and expressed as a daily growth % advantage. If the green line crosses over the 0.0 line, the date when that occurred or is predicted to occur will be shown. At that point the challenging Lineage is considered to have "crossed over" or taken over dominance from the incumbent Lineage

The Lineage classifications are provided by Nextclade.

The grey column chart across the bottom shows the volume of sequences available by date. As there can be long sample and data processing times, it is quite routine for recent dates to show lower sample sizes.



This page shows the hierarchy of the significant Lineages for Australia, over recent months.

The hierarchy can be read from left to right, starting with the earliest/highest Lineages being broken down into more detailed child Lineages.










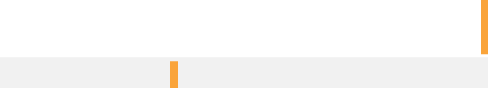

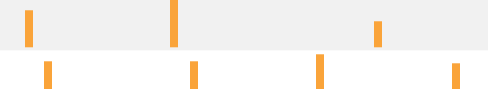




The vertical height of each bar segment represents the relative volume of all the samples of that specific Lineage, as well as all its descendants.

The full picture is typically quite busy, so insignificant Lineages (with few samples, or at the extreme top or bottom of the hierarchy) are not shown.

The Lineage classifications are provided by Nextclade.

Show most significant labels

Data Submitted in the last 8 weeks

Country	# Samples Sequenced	Latest Collection date	by Collection date	Latest Submission date	by Submission date
Australia	2,570	5/10/2024		5/11/2024	
New South Wales	563	4/28/2024		5/7/2024	
Queensland	683	4/23/2024		5/11/2024	
South Australia	575	5/5/2024		5/11/2024	
Tasmania	367	5/10/2024		5/11/2024	
Victoria	243	4/15/2024		4/30/2024	
Western Australia	139	5/1/2024		5/8/2024	
Total	2,570	5/10/2024		5/11/2024	

This page shows the volume and currency/timeliness of the genomic sequencing data shared for Australia via GISAID, over the last 8 weeks. A breakdown by state/jurisdiction is also shown.

Each sample shared comes with a Collection date - when the PCR test for that sample was collected. The GISAID system also records a Submission date for each sample, which is typically the date that sample was uploaded.

The latest date of each type is shown, along with "sparkline"-style mini charts to give a flavour for the spread of recent data by Collection date and by Submission date.