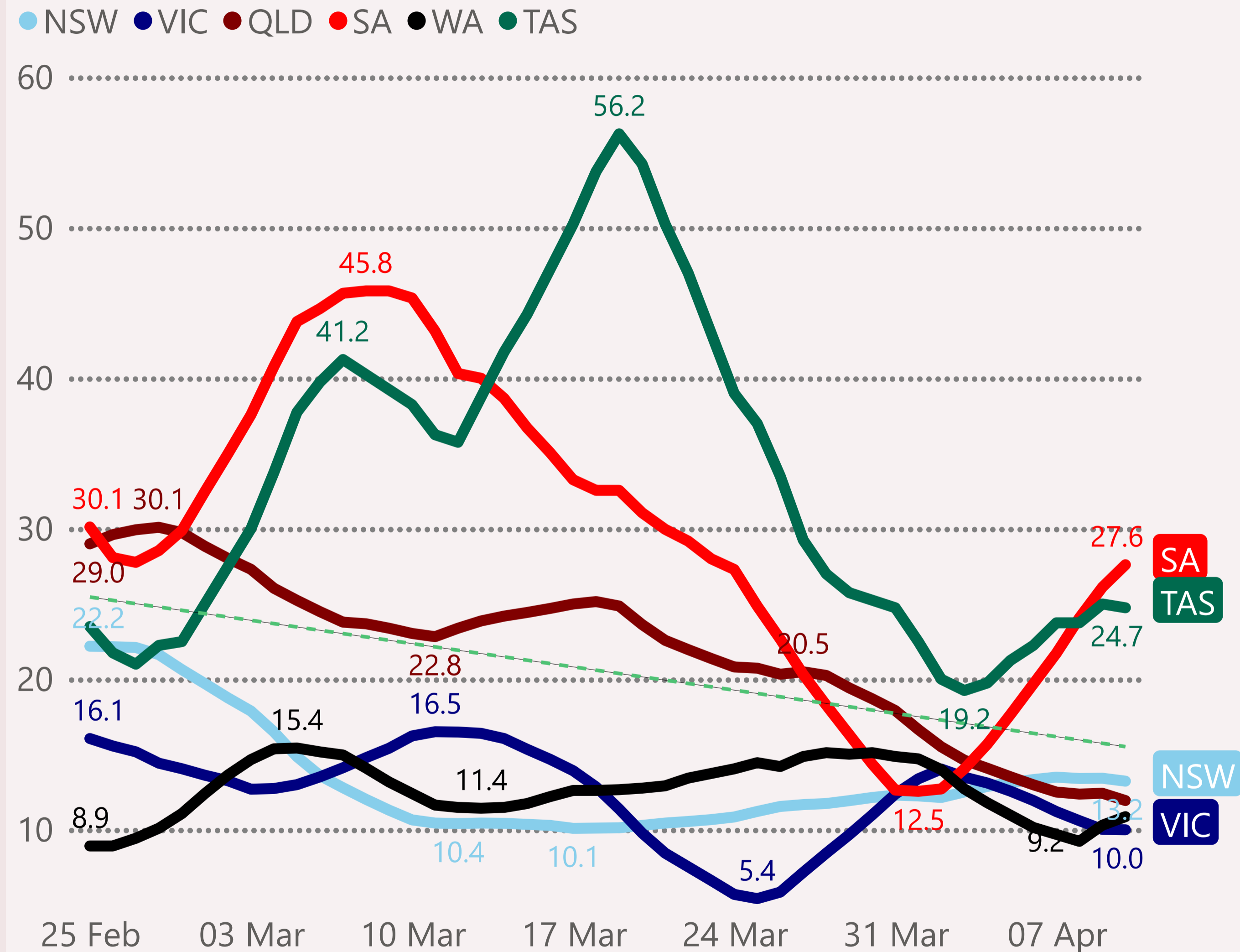


From: 25 February 2024 to 10 April 2024

### # Aged Care Staff Cases (7-day avg) per 1M



This page shows Aged Care Staff active cases for all states. These are probably the closest proxy available for infection levels, due to higher testing levels in this cohort.

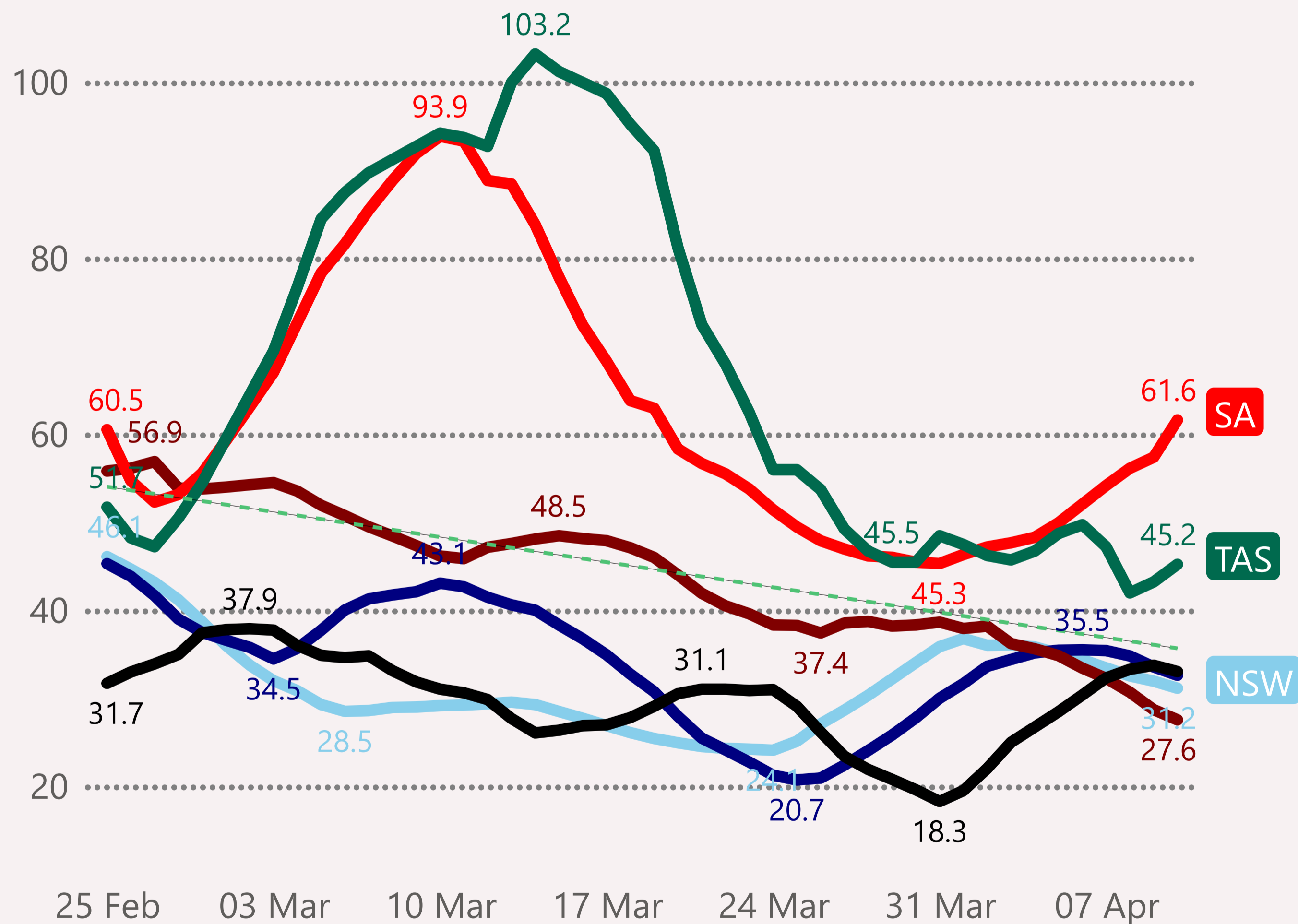
They are shown on a per-capita basis: cases per 1 million population, to help compare infection rates.

The last 2 months are shown, with daily detail.

From: 25 February 2024 to 10 April 2024

### # Aged Care Resident Cases (7-day avg) per 1M

● NSW ● VIC ● QLD ● SA ● WA ● TAS



This page shows Aged Care Resident active cases for all states.

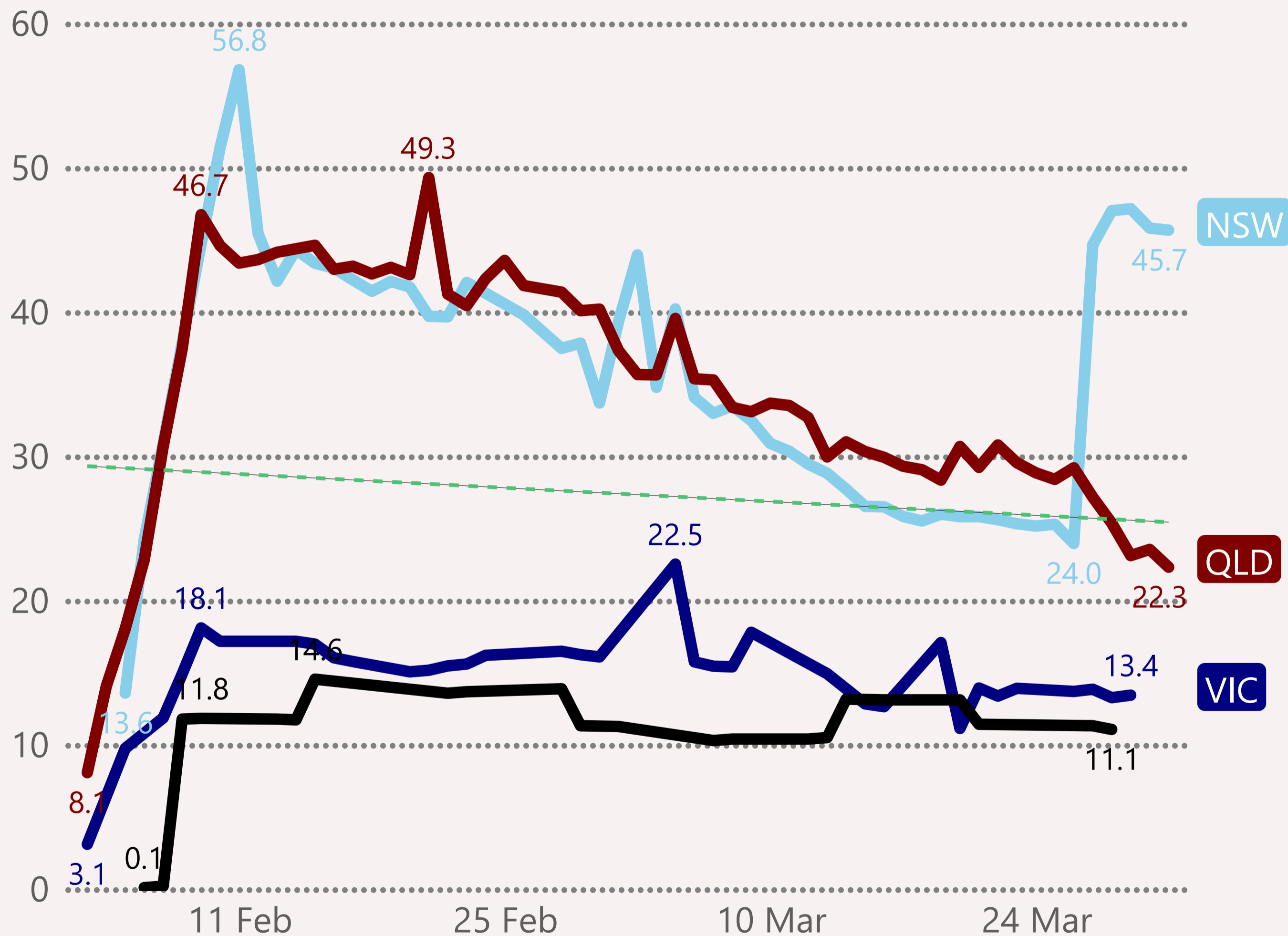
They are shown on a per-capita basis: cases per 1 million population, to help compare infection rates.

The last 2 months are shown, with daily detail.

From: 3 February 2024 to 31 March 2024

### # Cases per 1M (7-day avg)

● NSW ● VIC ● QLD ● WA



This page shows reported cases for the states that now only report cases from PCR tests, currently: NSW, Victoria, Queensland and WA.

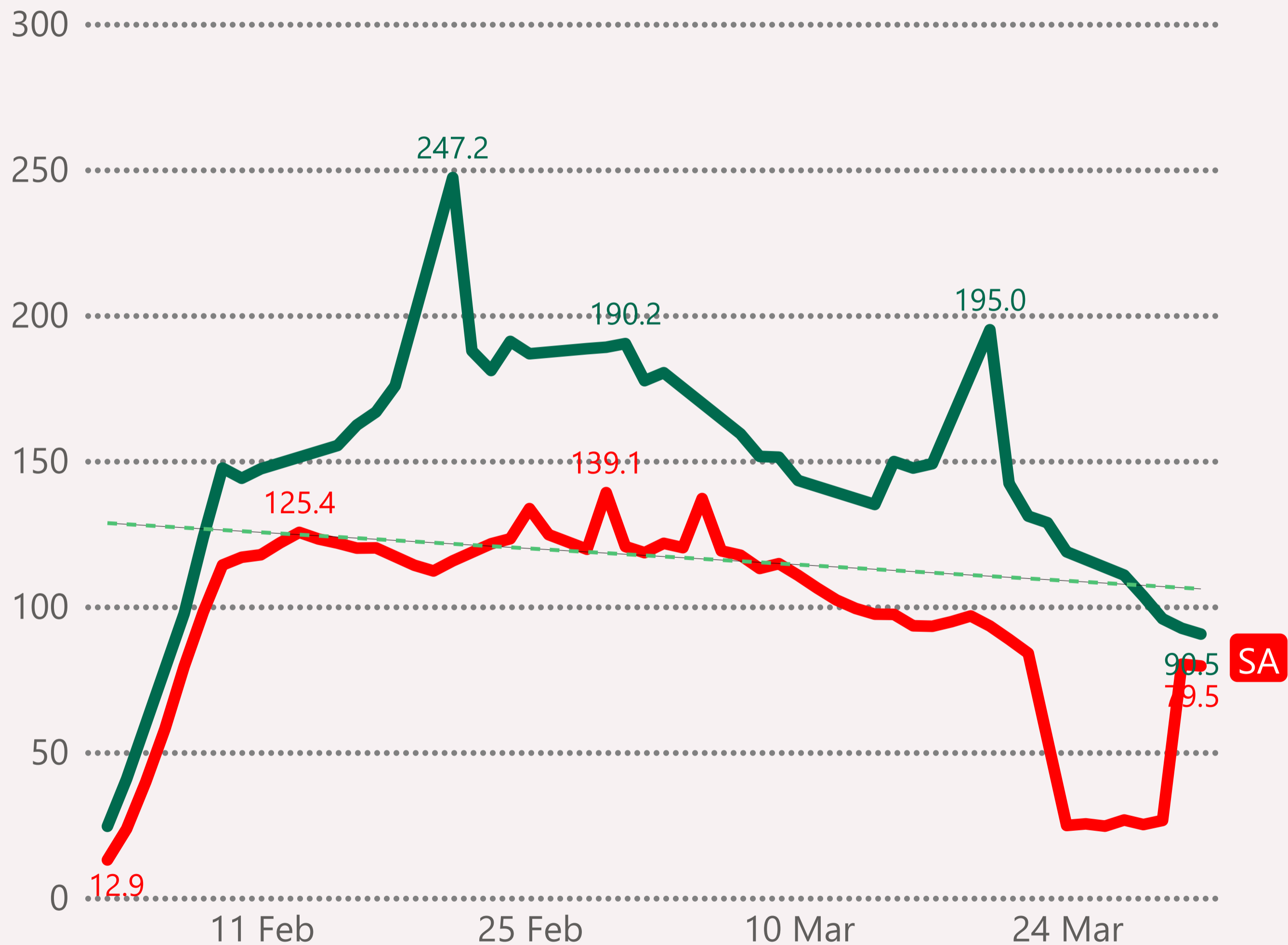
They are shown on a per-capita basis: cases per 1 million population, to help compare infection rates.

The last 2 months are shown, with daily detail.

From: 3 February 2024 to 31 March 2024

### # Cases per 1M (7-day avg)

● SA ● TAS



This page shows reported cases for the states that now only report cases from PCR tests, currently: South Australia and Tasmania.

They are shown on a per-capita basis: cases per 1 million population, to help compare infection rates.

The last 2 months are shown, with daily detail.

# Australia Vaccinations

## New Doses

From 11/12/2023 up to and including 10/04/2024

Daily - new doses  
12,075

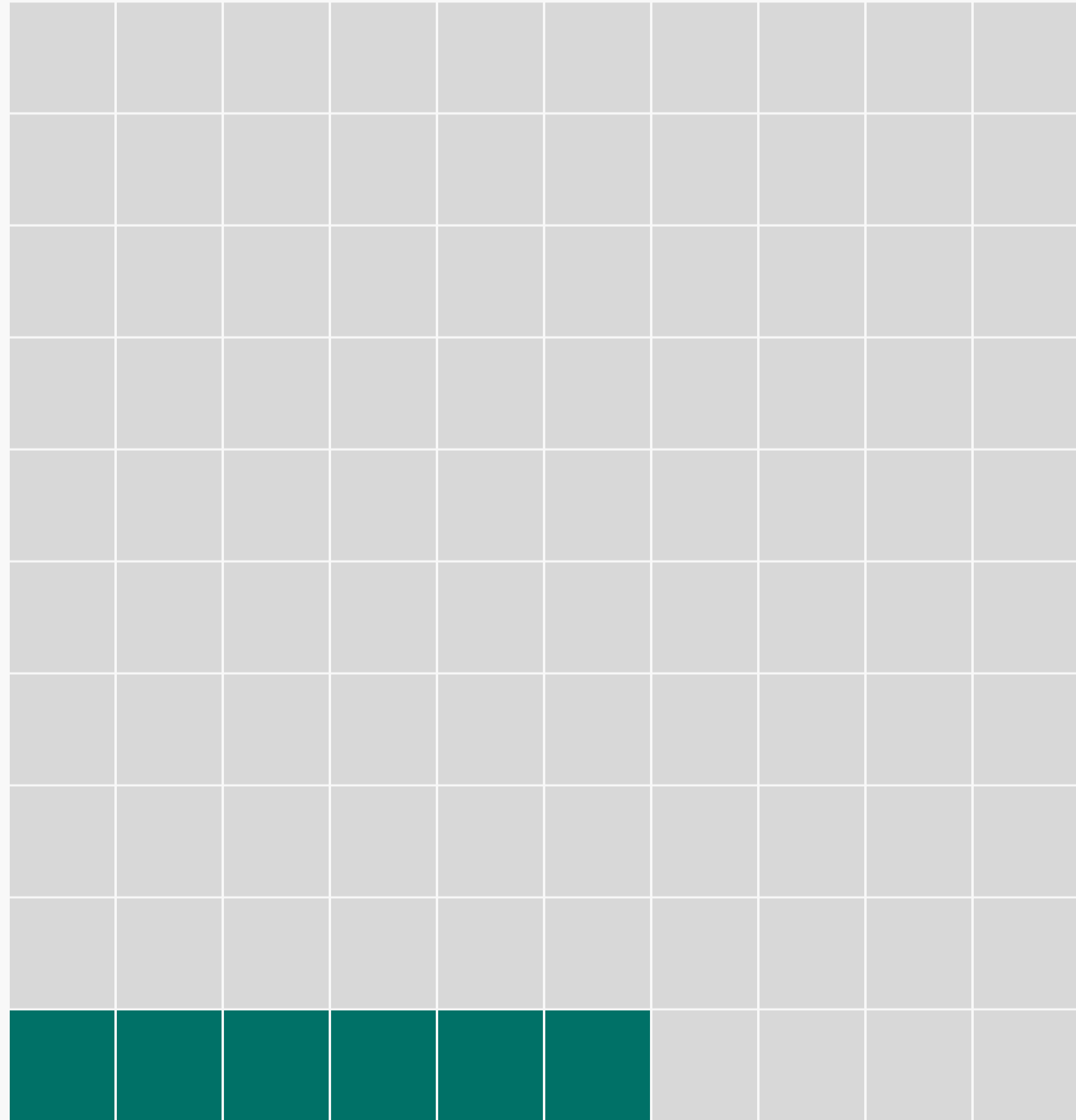
Total - doses  
1,326,074

This page shows the coverage of vaccination doses since 11 December 2023. These are assumed to be the XBB.1.5 vaccine, as that was when that vaccine became available.

The comparison is as a percentage of the Australian Adult population.

Percentage of population (Adult)

no new dose 93.7 %



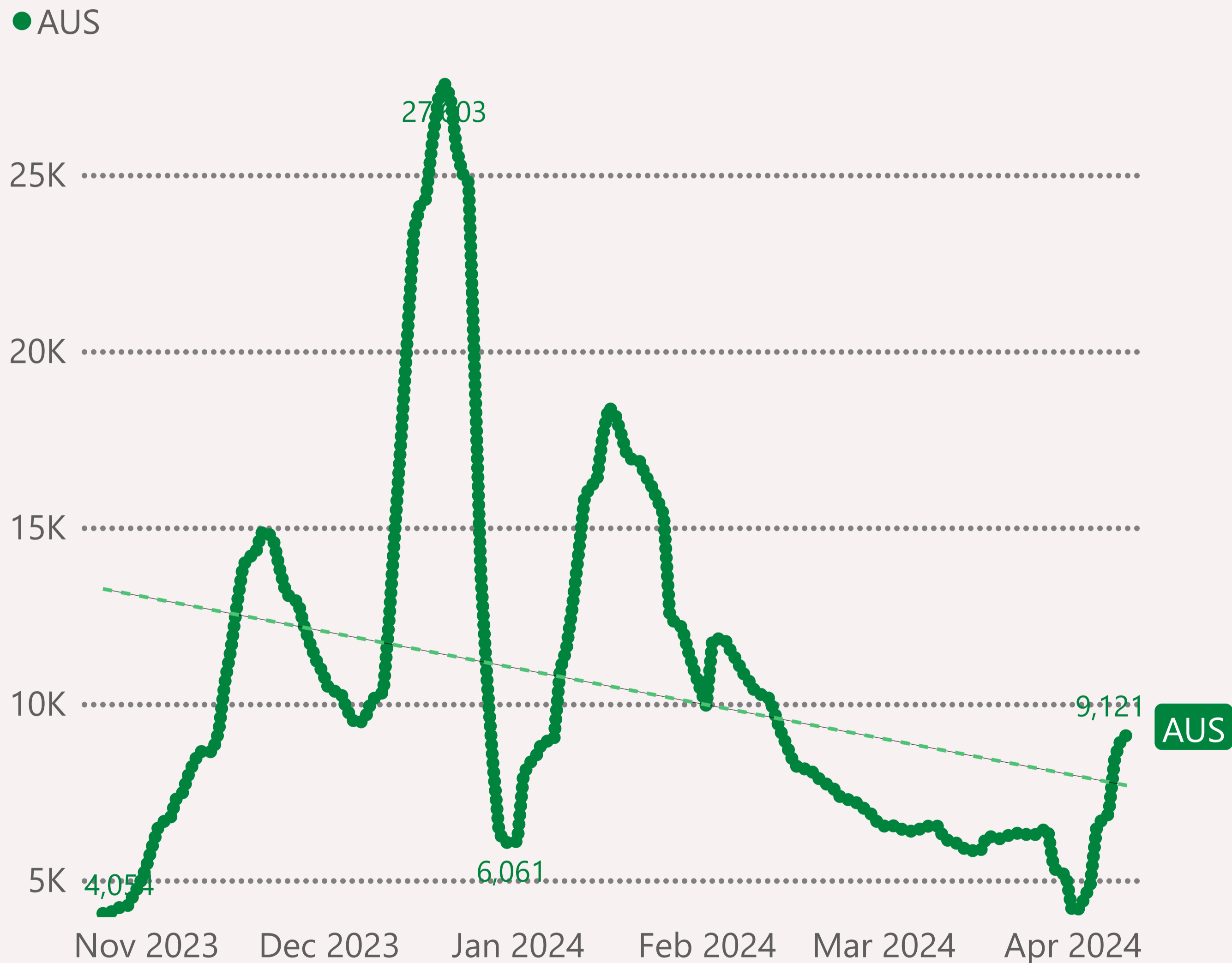
new dose 6.3 %



Each square is approximately 209,100 people.

From: 25 October 2023 to 10 April 2024

### # New Vaccination Doses (7-day avg)



This page shows the delivery of vaccination doses over the last 6 months, for Australia.

On 11 December 2023, the XBB.1.5 vaccine became available in Australia, which led to a temporary surge of vaccination doses over December/January.